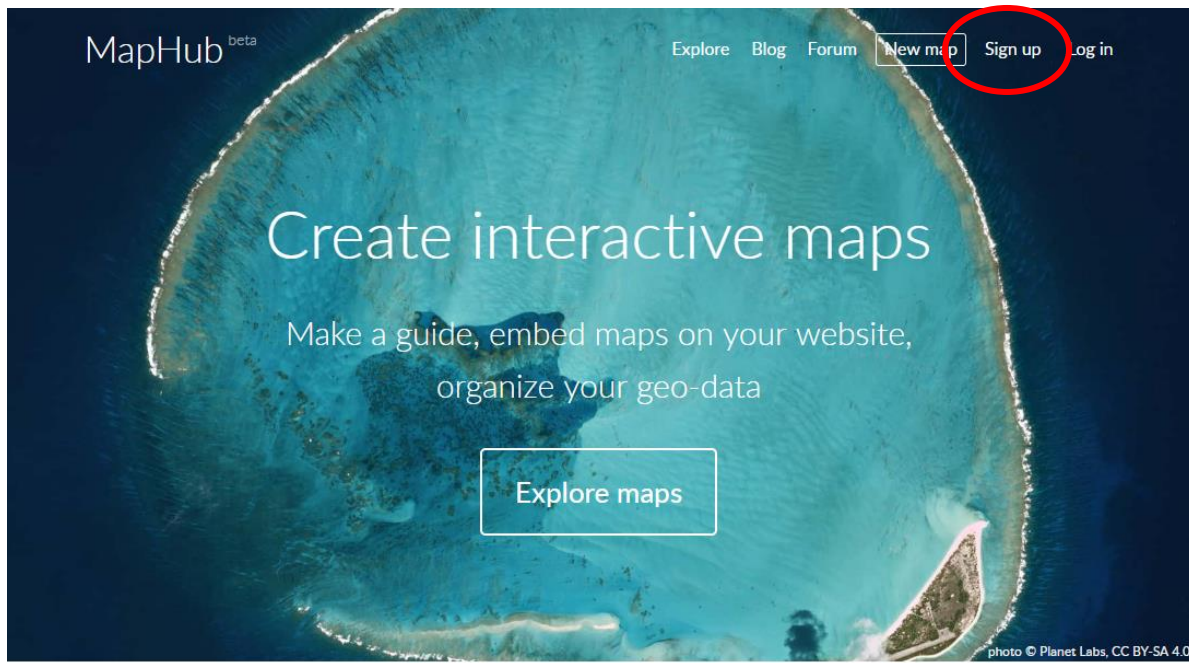


MapHub User Guide

MapHub is a web based mapping application made available for the general public's use in developing web maps and applications. MapHub is free to use.

Navigate to: <https://maphub.net/>

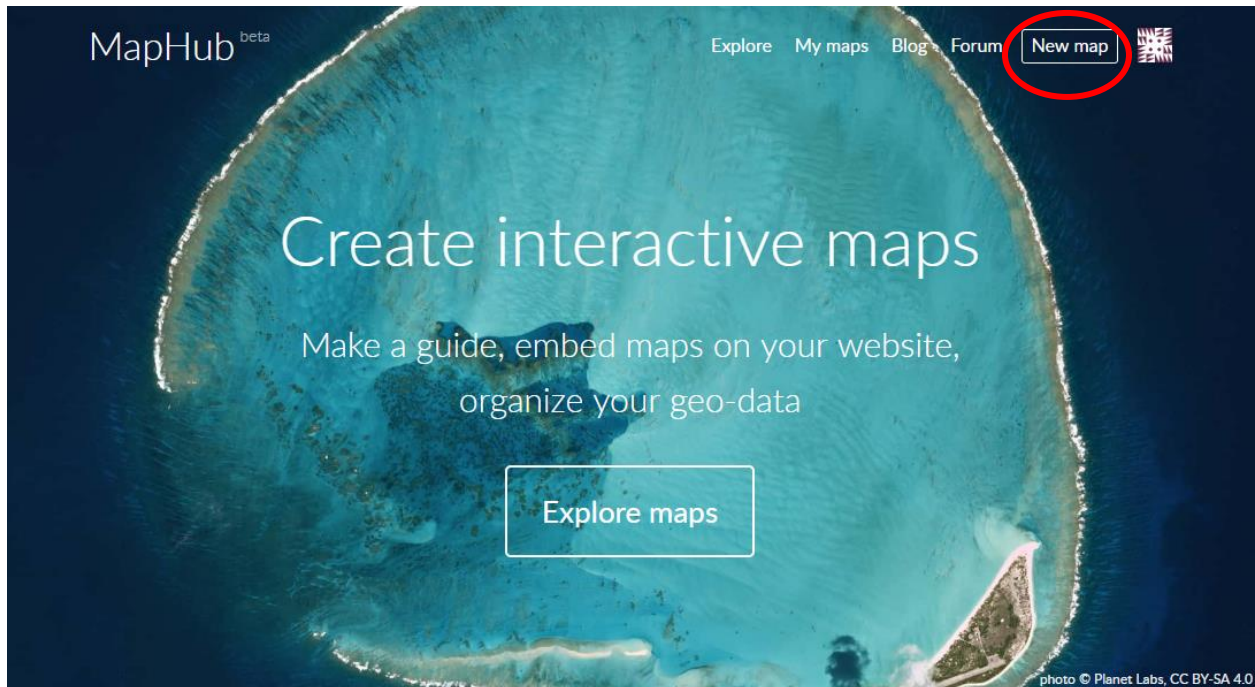
Choose "Sign Up"



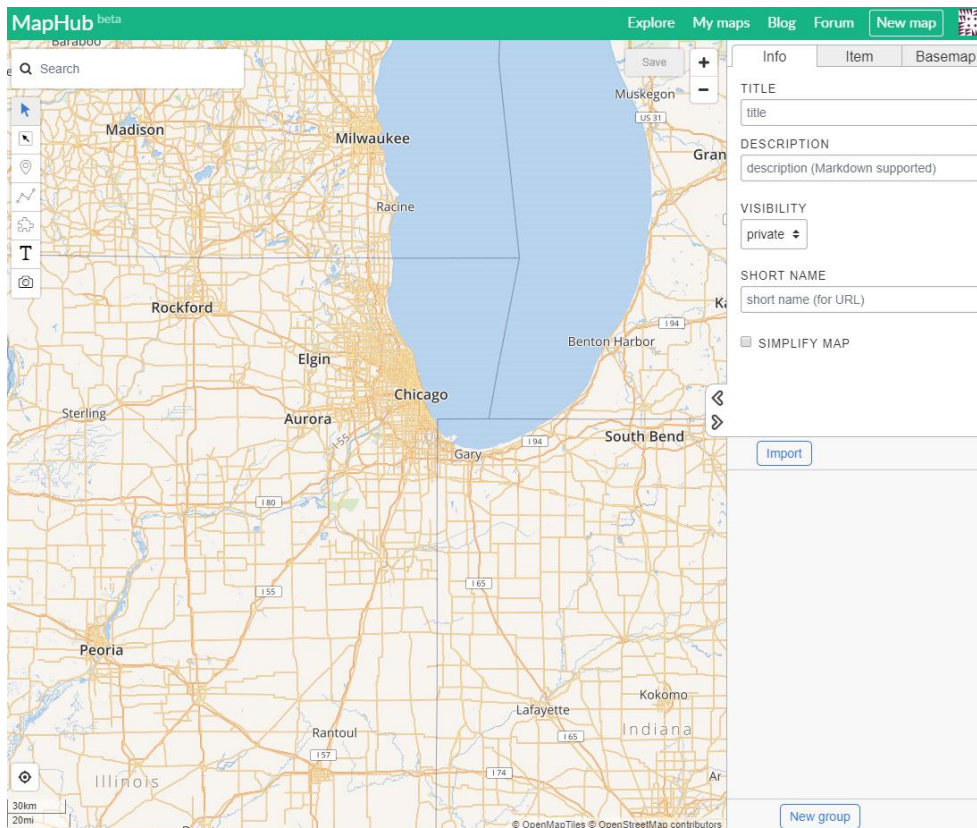
Create a username and log-in for MapHub. You must have a valid e-mail to create a username and password:

A screenshot of the MapHub sign-up form. The top navigation bar is green with the MapHub logo and links for 'Explore', 'Blog', 'Forum', 'New map', 'Sign up', and 'Log in'. The main heading is 'Sign up for MapHub'. Below it, there is a link: 'Already have an account? [Login here.](#)'. The form has three input fields: 'Username', 'Email', and 'Password'. Below the fields, there is a line of text: 'By signing up, I agree to MapHub's Terms of Service and Privacy Policy.' At the bottom, there is a green 'Sign up' button.

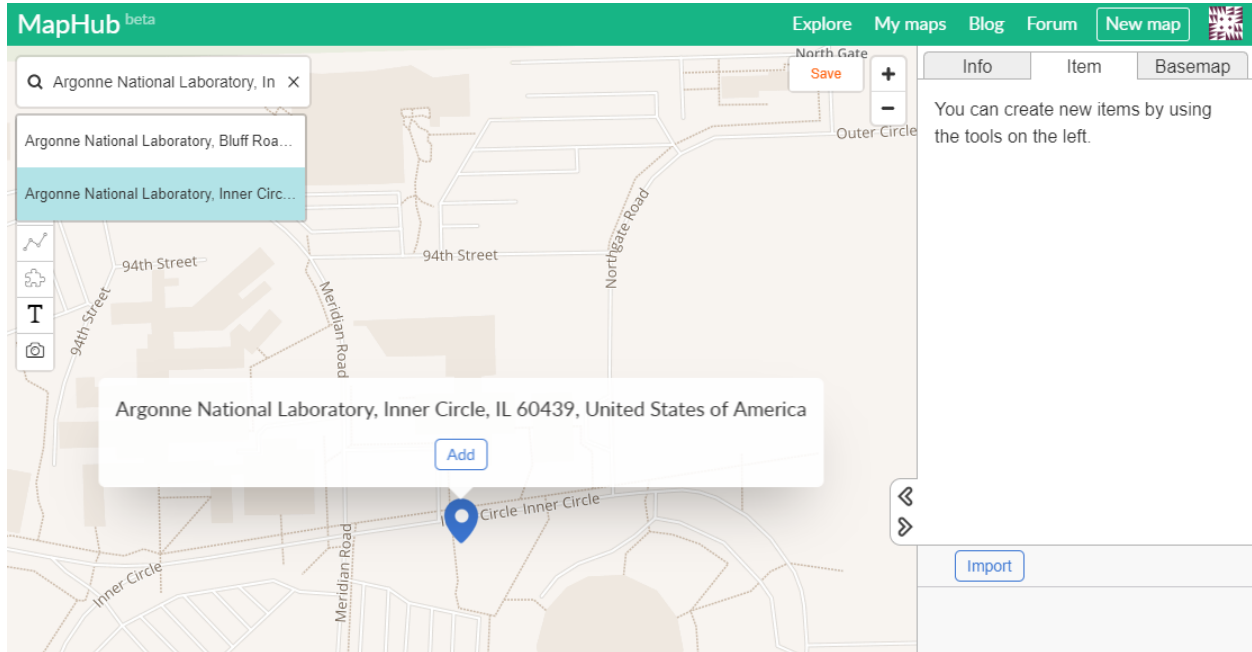
Once you've created and confirmed your account, please log-in and choose "New Map" from the options at the top of the page:



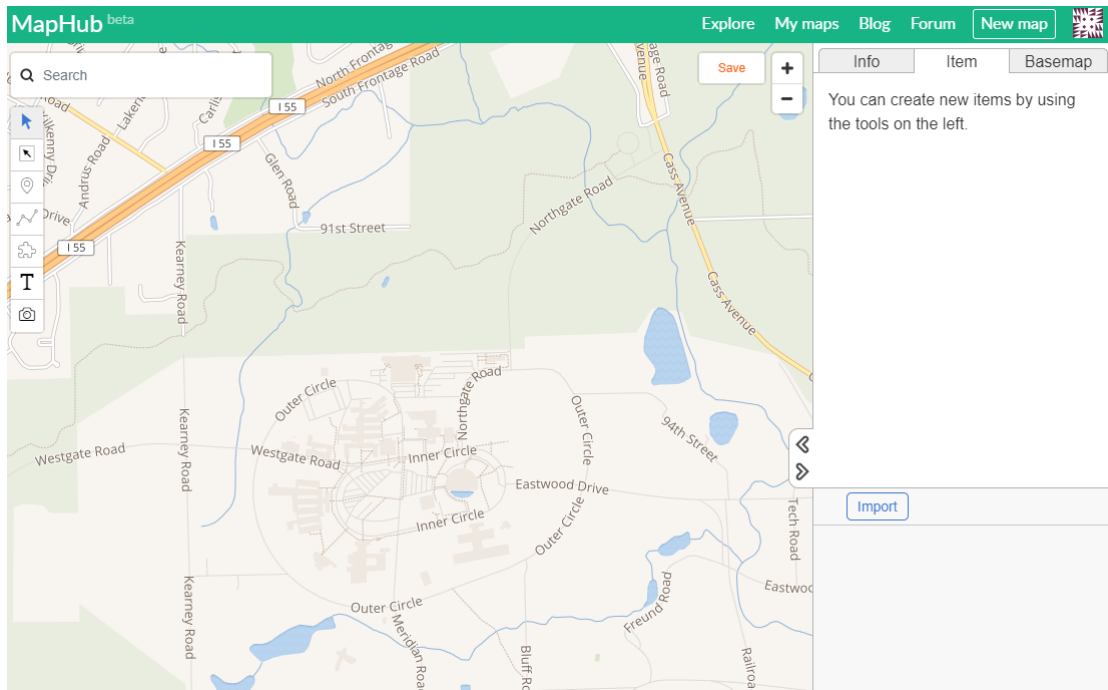
We can begin by getting familiar with the MapHub interface.



For the purpose of this exercise, let's zoom into Argonne National Laboratory to start. Type in "Argonne National Laboratory" into the "Search" window. After you hit "enter" the MapHub will give you some options to choose from – Choose the second option "inner circle" and MapHub will zoom to your destination.

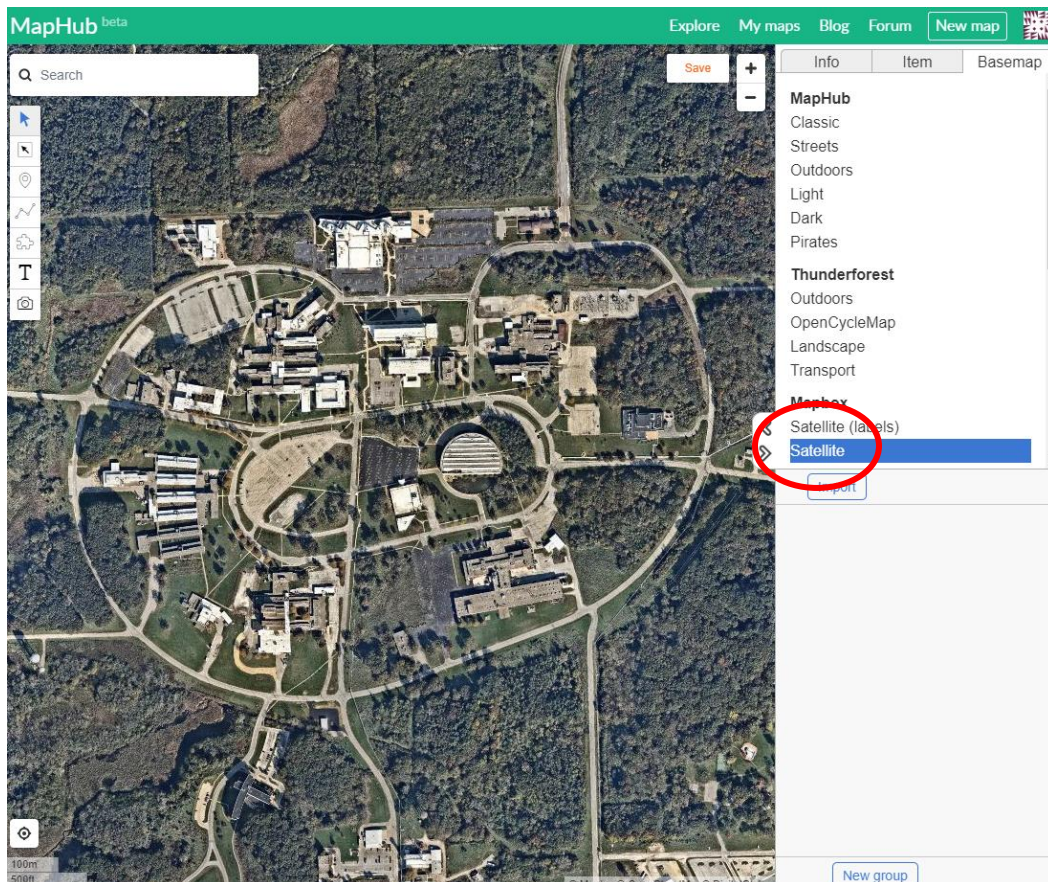
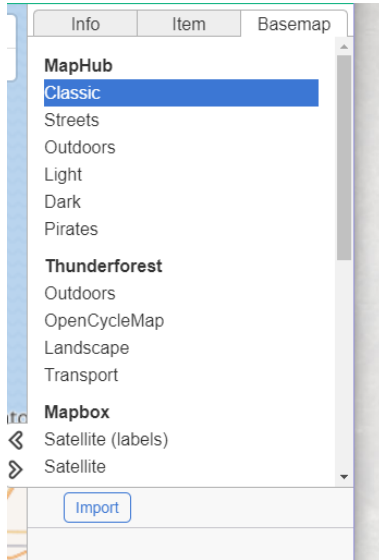


Zoom out a bit to find a good view of the laboratory campus:

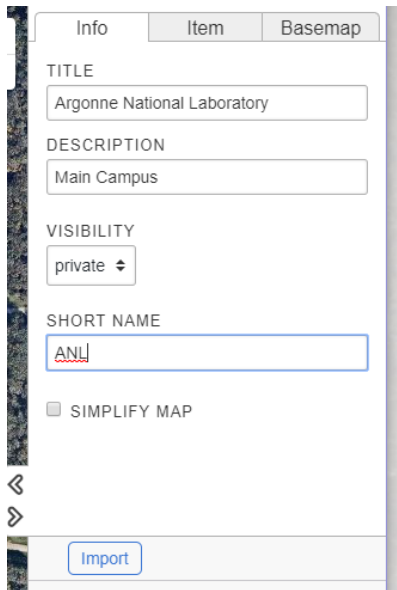


Let's change our basemap:

Choose the background or **Basemap** of your map from a list of options that include MapHub's own six layouts, and a list of others from Thunderforest, MapQuest and CartoDB for example. For emergency operations, we may want to stick with simple maps like a street map or a satellite map (aerial imagery). I choose "Satellite" under MapBox



Next, give your map some basic info such as a title or description.



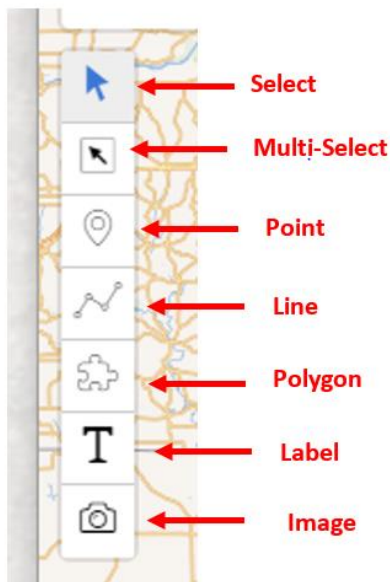
The screenshot shows the 'Info' tab of a map configuration interface. It includes the following fields and options:

- TITLE:** Argonne National Laboratory
- DESCRIPTION:** Main Campus
- VISIBILITY:** private (with a dropdown arrow)
- SHORT NAME:** ANL (with a red underline)
- SIMPLIFY MAP
- Import** button

We can choose our own title, description and also decide if we want our map to be private or public. If we were prepping a map template to use during an emergency we might keep the map private until such time as we needed to share it with our population.

We can also give it a “Short Name” or custom URL that can be used to make it easier for people to find.

There are a number of different ways we can use MapHub to customize our maps. Here is a brief overview of the tools available to use (for free!) using MapHub:



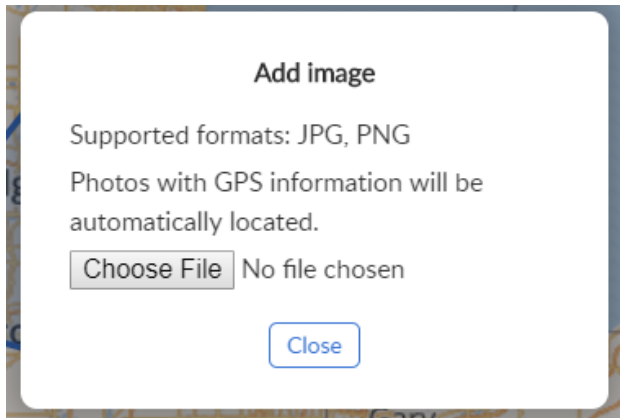
The **Point Tool** allows you to create a “new item” by clicking on the map. Use your mouse to pan and zoom in order to find the right spot to place your marker.

The **Line Tool** allows you to create a “new line” by clicking on the map. Click once, draw your line and the double click to finish. Alternatively, you can keep single clicking to add to your line.

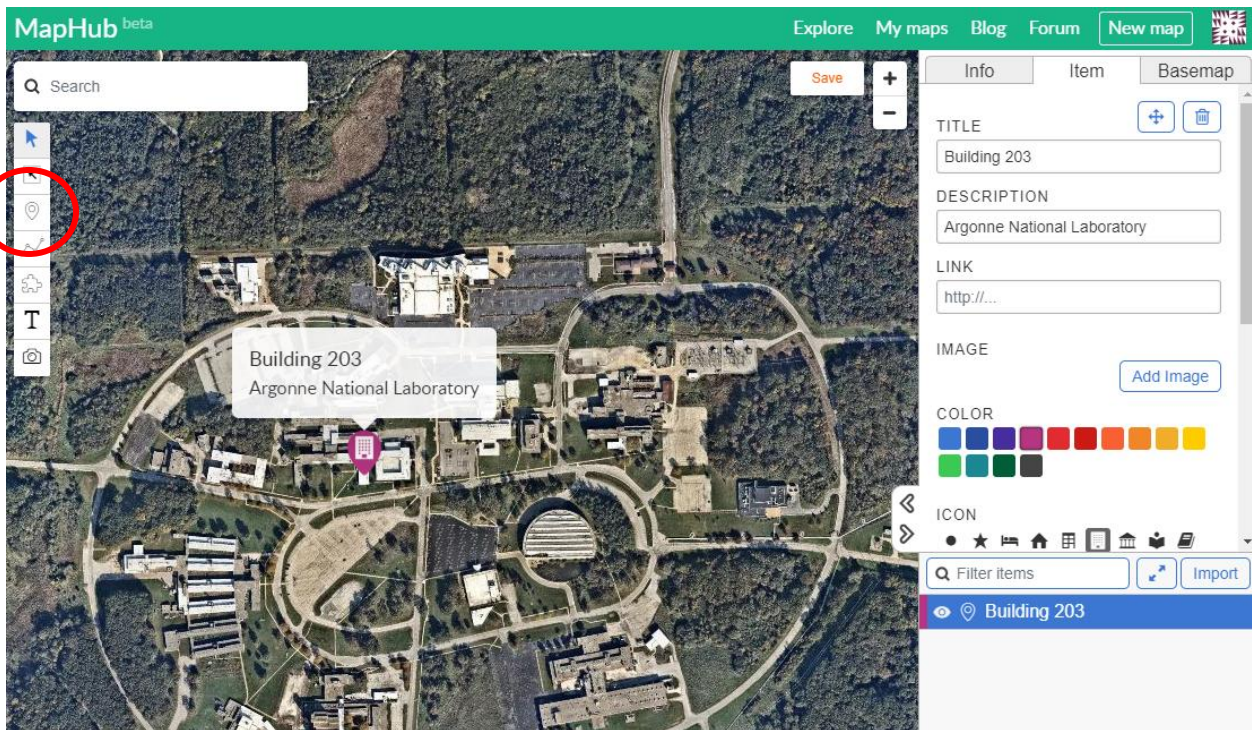
The **Polygon Tool** allows you to create a “new area” by clicking on the map. Click once to start your drawing and then click around to add to the area of your polygon.

The **Label Tool** allows you to create “text” on a specific point on your map. You can use this to label building or other areas of interest or simply use it to create a “Title” for your map.

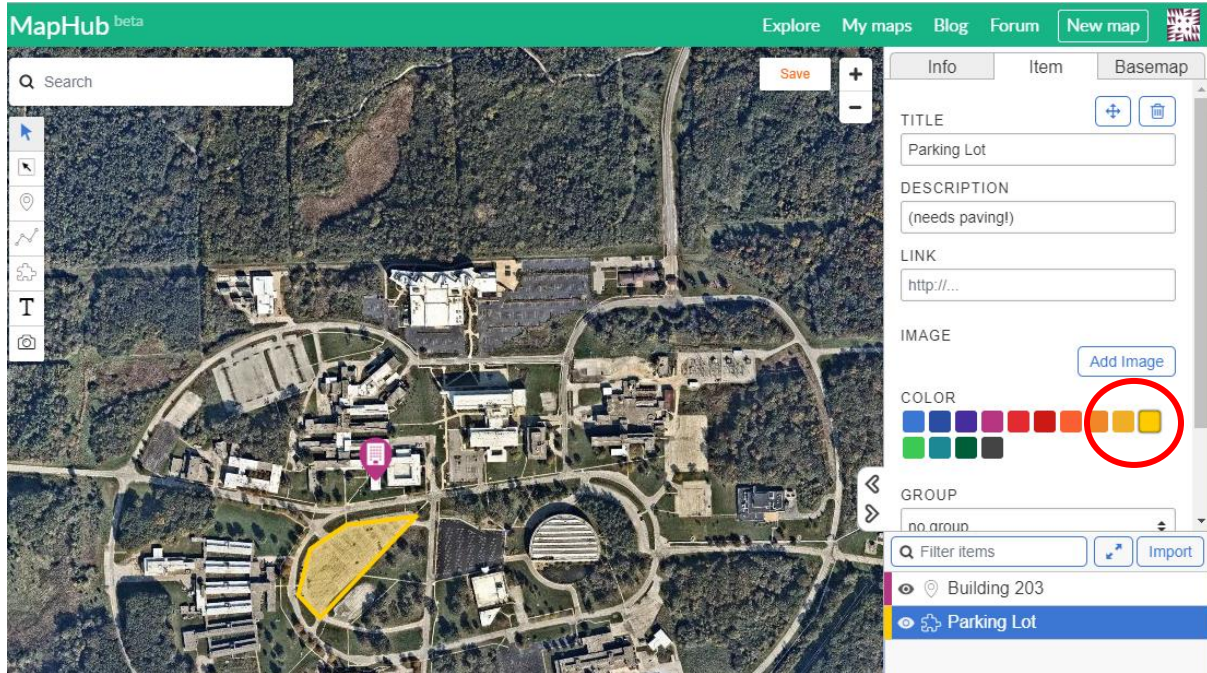
The **Image Tool** allows you to store an image or photo in your map. If you have geo-tagged images (say taken with a cell phone camera) the map will display that image at the precise GPS coordinates.



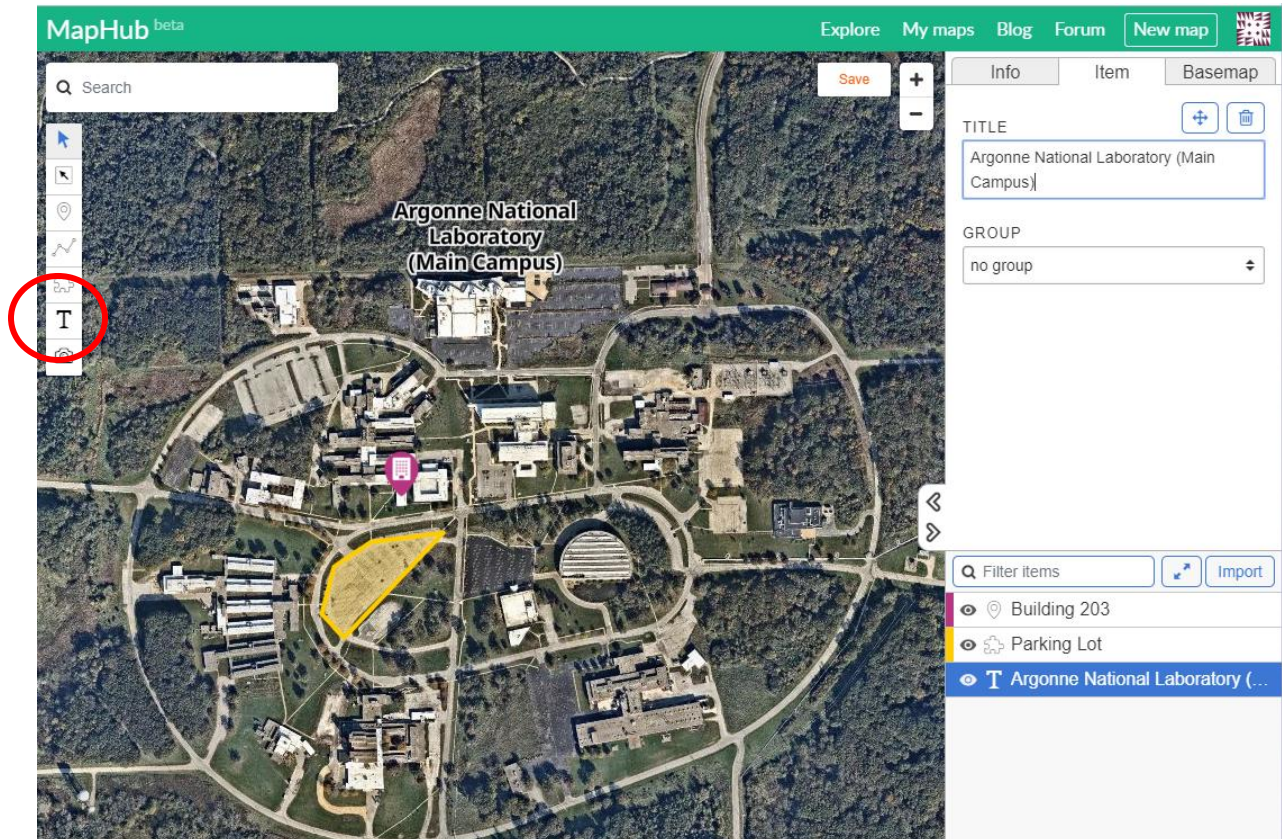
Use the second button in the list, called 'Point', to place your first marker on the map, and give it a name. You can also change the pin's color and set an icon to illustrate what it is, such as a building. I have placed a marker on Building 203 (the building we're in!) and edited the items description.



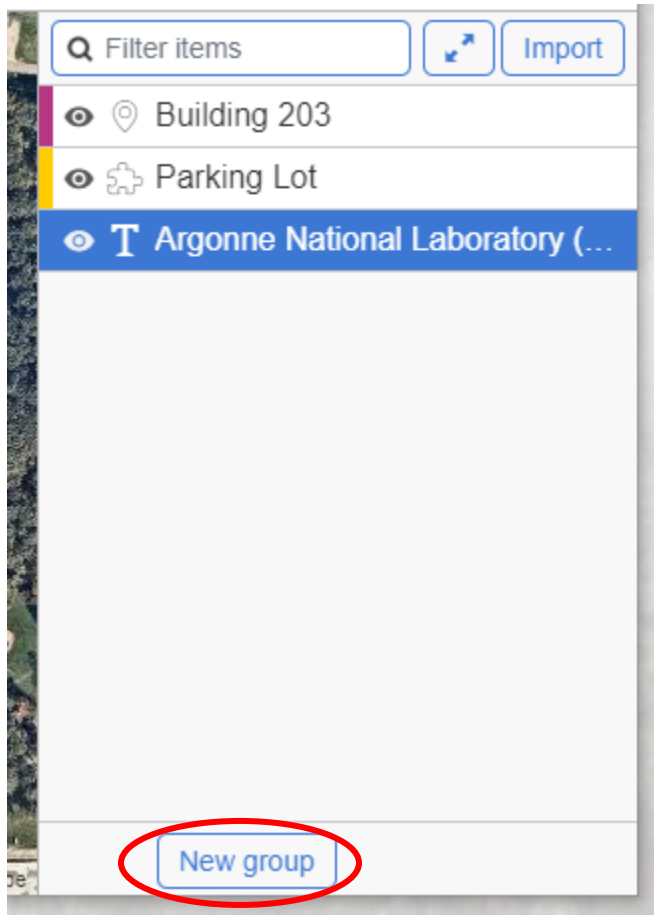
Next, I am going to use the polygon tool to highlight the parking lot in front of this building. I decided to change the color to yellow to show up nicely against the basemap background.



I can also use the Label tool to give the entire map a label:



Take a look at how all the items I've created so far (a point, a polygon and a label) are shown as a list in the table of contents:

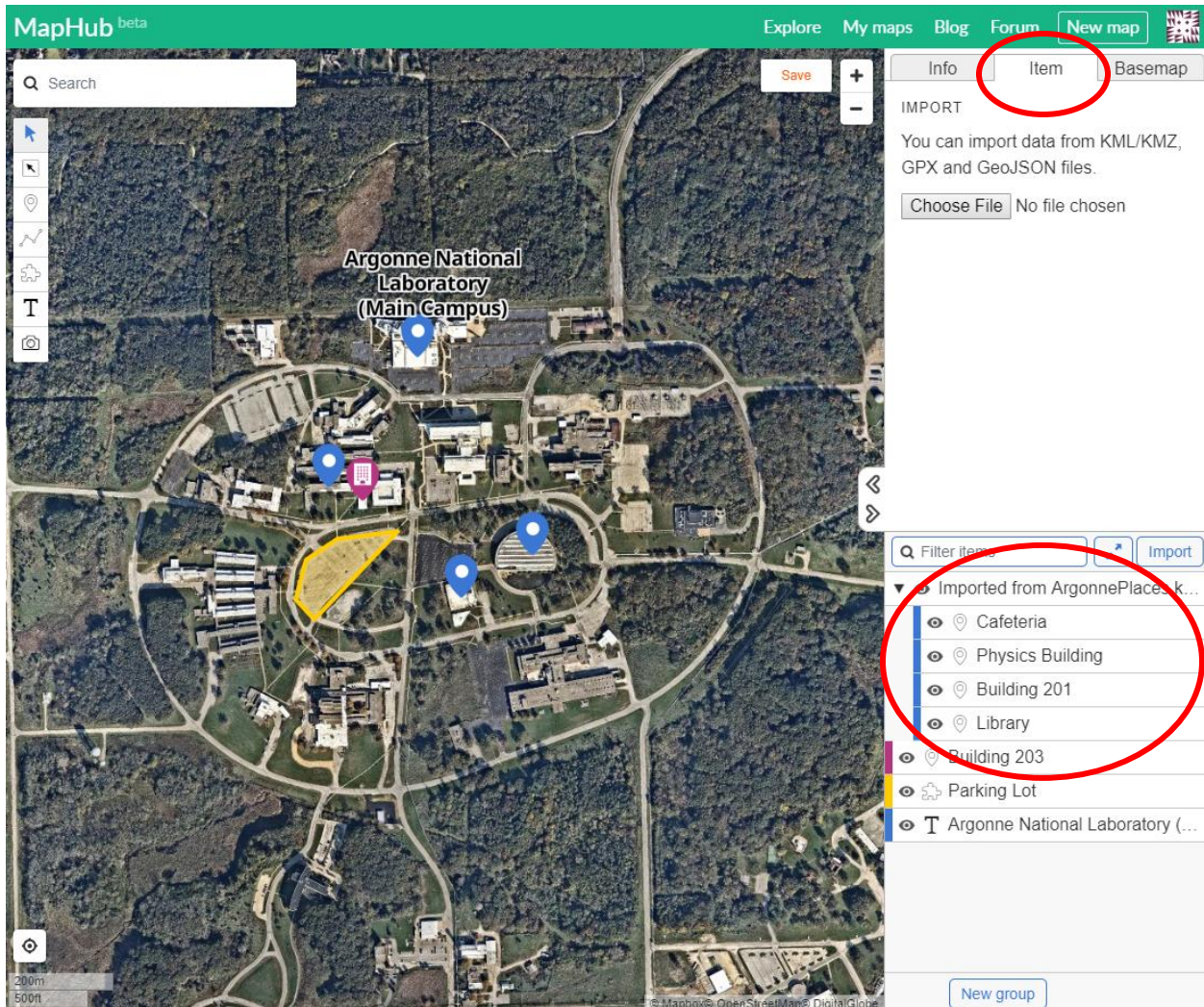


I can use the “New Group” button to group like items together – or to keep themed items together. For example, if I had used the point tool to mark 5 or 10 intersections that were closed for flooding, I could create a new group called “Closed Intersections” and store all of those points within that group.

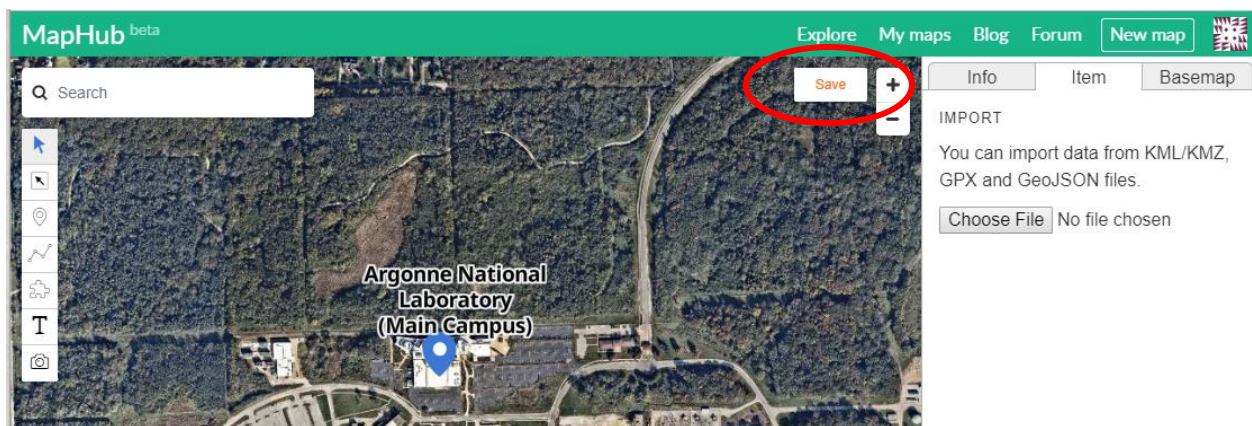
This allows me to keep my map neat and organized.

You can also upload your own data to the MapHub map – in this example I am using a KMZ that you can create through Google Earth. Go to the “Item” tab and then click “Choose File” - Navigate to the KMZ ([located at this box link](https://anl.box.com/s/8kjmzoinj4h2ra44xloggc5gcb8nxe9e)): <https://anl.box.com/s/8kjmzoinj4h2ra44xloggc5gcb8nxe9e> and import it into the map.

You'll see that a number of other points are copied into your map – including the location of the cafeteria, library, and administration building here at Argonne.

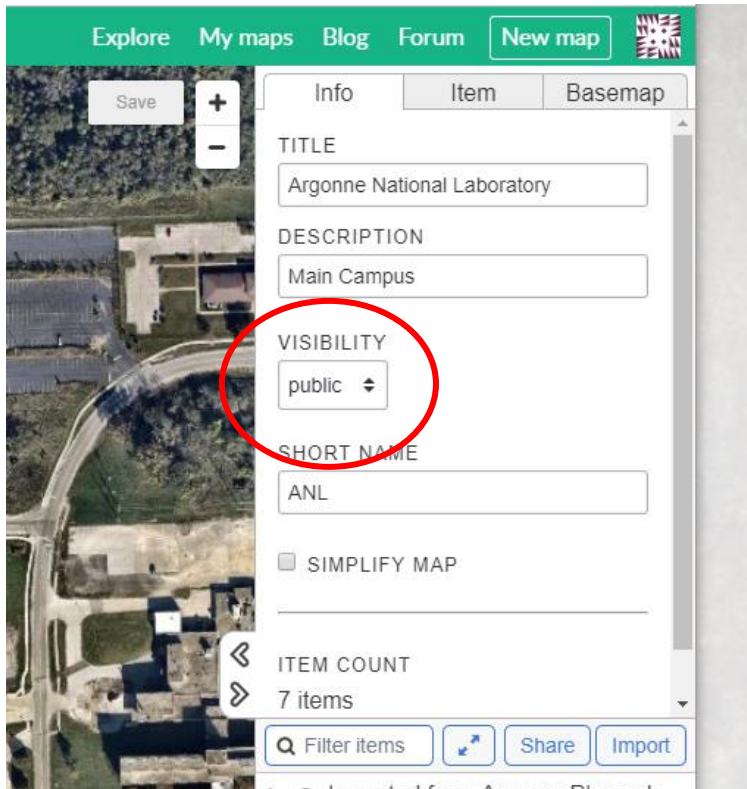


Save your map:



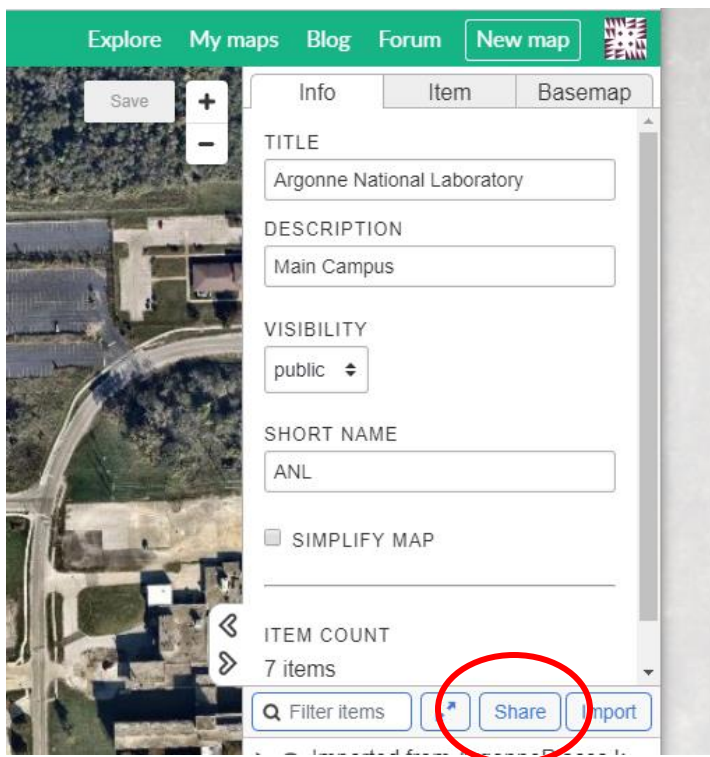
Now that you have saved your map, you can share it in a number of ways.

Navigate to the info tab and choose "Public" from the "Visibility" Dropdown.

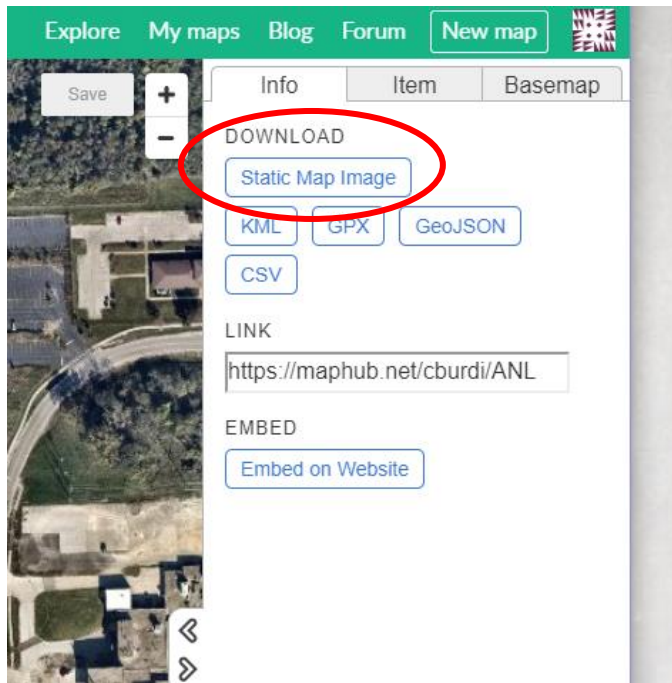


Click "Save" again.

Click on the "Share" link



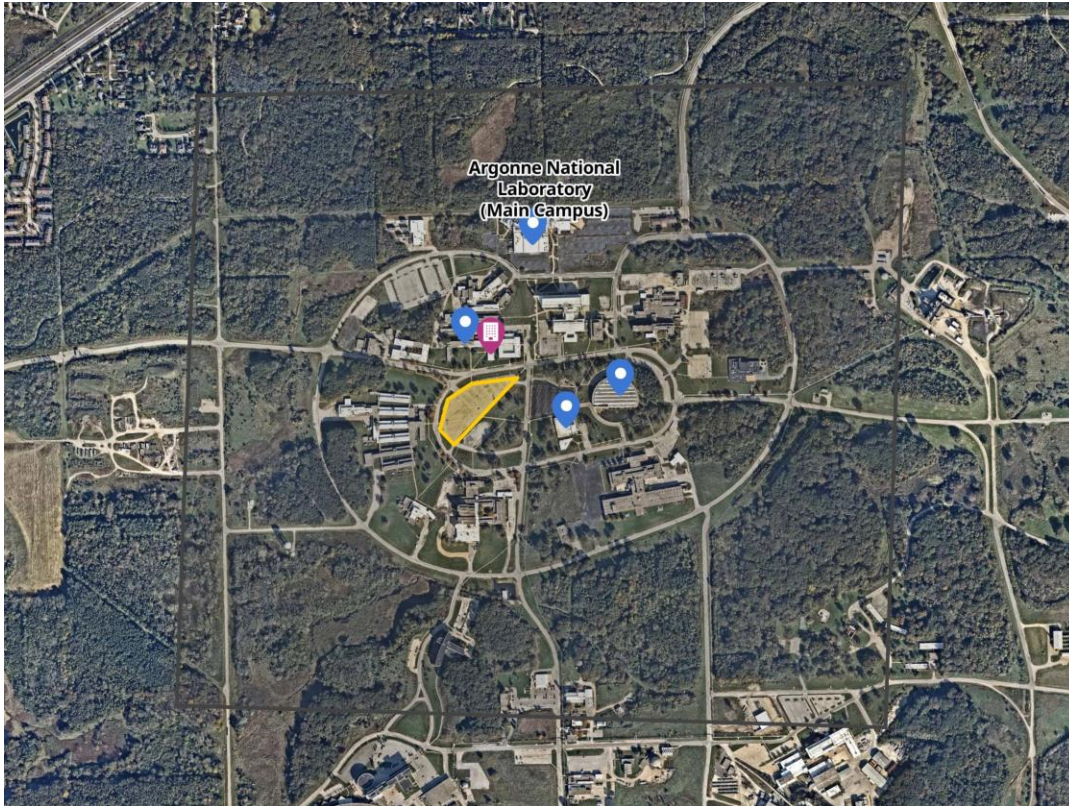
You are then presented with a number of options:



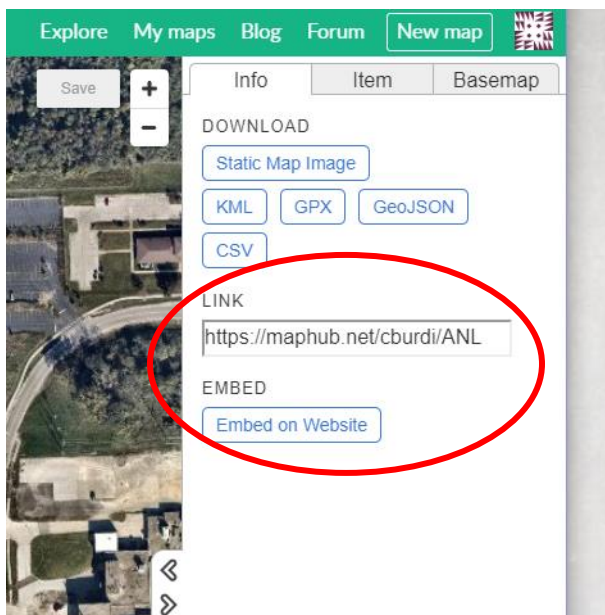
A “Static Map Image” will present you with just an jpg of your map – if you don’t like the formatting, you can pan and zoom around your map and save it again to get a better view.



Your map image will be snipped to the extent of your features – so if you want to extend the view of your image, place a polygon around the area you want to make sure gets shown.



You can also link directly to your map with the web-link. Or you can embed your map on a website. If you are using social media or other web-based forms of communication to get in touch with your population, this is a great option!



Imagine being able to show exact evacuation routes or highlight closed roads right within your protective action message!

The “Embed on Website” option provides you with a few opportunities for what kind of button you’d like. Work with your website admin or other social media administrator to test out what will work best for your jurisdiction:

Embed Map on Website

PANEL BUTTON RESPONSIVE WORDPRESS

WIDTH (PIXELS) HEIGHT (PIXELS)

CODE

```
<iframe width="768" height="576"
src="https://maphub.net/embed/38648?panel=1" frameborder="0">
</iframe>
```

PREVIEW (hide)

Argonne National Laboratory
(Main Campus)

MapHub

Close

Exercise Notes: Great work! You’ve created a free and easy map. Can you imagine how this could be used in the case of an emergency? What do you think was the best part about MapHub? What didn’t you like?